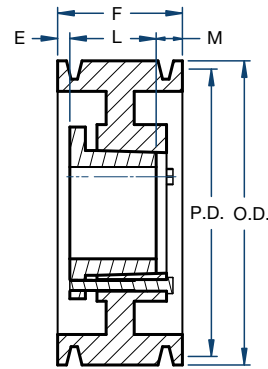
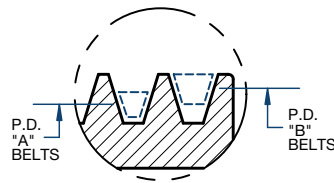
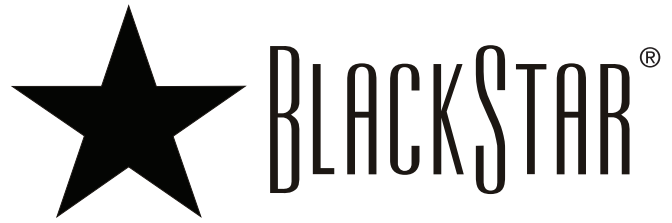


Sheaves

10B/QD STYLE



Type A

Part No.	Bushing	Bore Range (in)	Type	Diameter (in)			Dimensions (in)				Weight less Bore (lbs)
				Pitch B	Pitch A	Outside	E	F	L	M	
10B54SK	SK	1/2 – 2-5/8	A	5.4	5.0	5.75	1-25/32	7-3/4	1-15/16	4-1/32	18.0
10B56SK	SK	1/2 – 2-5/8	A	5.6	5.2	5.95	1-25/32	7-3/4	1-15/16	4-1/32	20.0
10B60SF	SF	1/2 – 2-15/16	A	6.0	5.6	6.35	1-23/32	7-3/4	2-1/16	3-31/32	24.0
10B64SF	SF	1/2 – 2-15/16	A	6.4	6.0	6.75	1-23/32	7-3/4	2-1/16	3-31/32	26.0
10B68SF	SF	1/2 – 2-15/16	A	6.8	6.4	7.15	1-23/32	7-3/4	2-1/16	3-31/32	28.0
10B74SF	SF	1/2 – 2-15/16	A	7.4	7.0	7.75	1-23/32	7-3/4	2-1/16	3-31/32	32.0
10B86E	E	7/8 – 3-1/2	A	8.6	8.2	8.95	1-31/32	7-3/4	2-3/4	3-1/32	42.0
10B94E	E	7/8 – 3-1/2	A	9.4	9.0	9.75	1-31/32	7-3/4	2-3/4	3-1/32	48.0
10B110E	E	7/8 – 3-1/2	A	11.0	10.6	11.35	1-31/32	7-3/4	2-3/4	3-1/32	56.0
10B124E	E	7/8 – 3-1/2	A	12.4	12.0	12.75	1-31/32	7-3/4	2-3/4	3-1/32	64.0
10B154F	F	1 – 4	A	15.4	15.0	15.75	5/8	7-3/4	3-3/4	3-9/32	88.0
10B184F	F	1 – 4	A	18.4	18.0	18.75	5/8	7-3/4	3-3/4	3-9/32	103.0
10B200F	F	1 – 4	A	20.0	19.6	20.35	5/8	7-3/4	3-3/4	3-9/32	112.0
10B250F	F	1 – 4	A	25.0	24.6	25.35	5/8	7-3/4	3-3/4	3-9/32	142.0
10B300F	F	1 – 4	A	30.0	29.6	30.35	5/8	7-3/4	3-3/4	3-9/32	174.0
10B380J	J	1-1/2 – 4-1/2	A	38.0	37.6	38.35	1/8	7-3/4	4-5/8	3	230.0